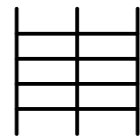
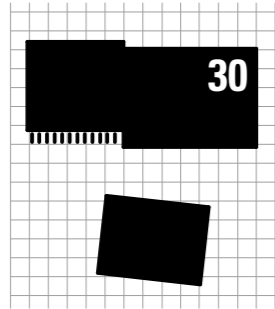


Neubau Logistikzentrum Motorex AG, Langenthal
Workshopverfahren - Workshop 4, 21.11.2022

Variante 1



162 Regale



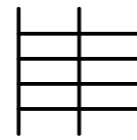
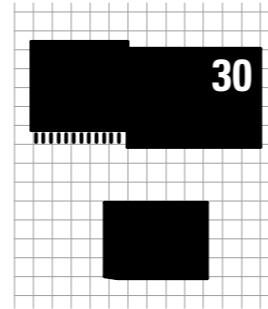
119 Parkplätze



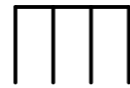
optimale
Bewirtschaftung

Bauland bei Tanklager geht verloren

Variante 2



161 Regale



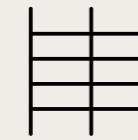
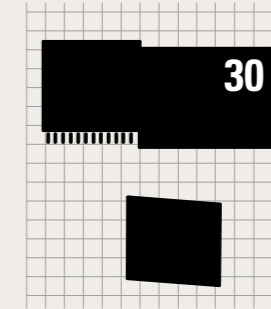
117 Parkplätze



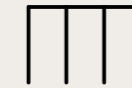
optimale
Bewirtschaftung

Bauland entlang Gaswerkstrasse
und Hardau geht verloren

Variante 3



160 Regale



131 Parkplätze



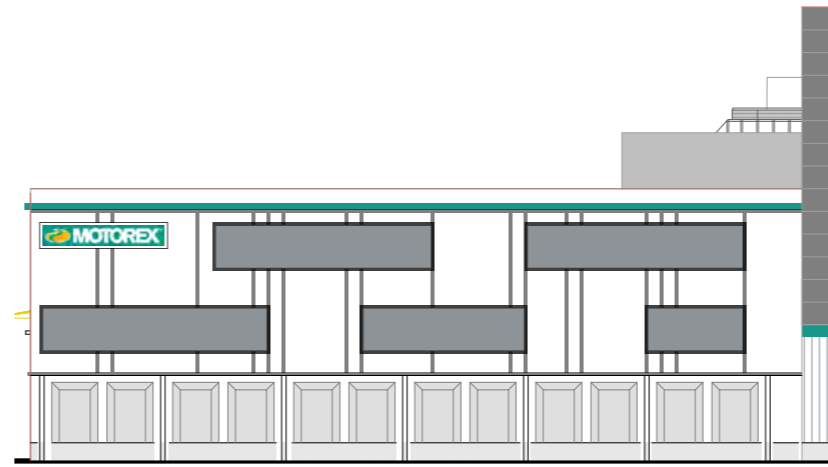
Kompromiss bei
Bewirtschaftung

Bauland wird am Besten ausgenützt

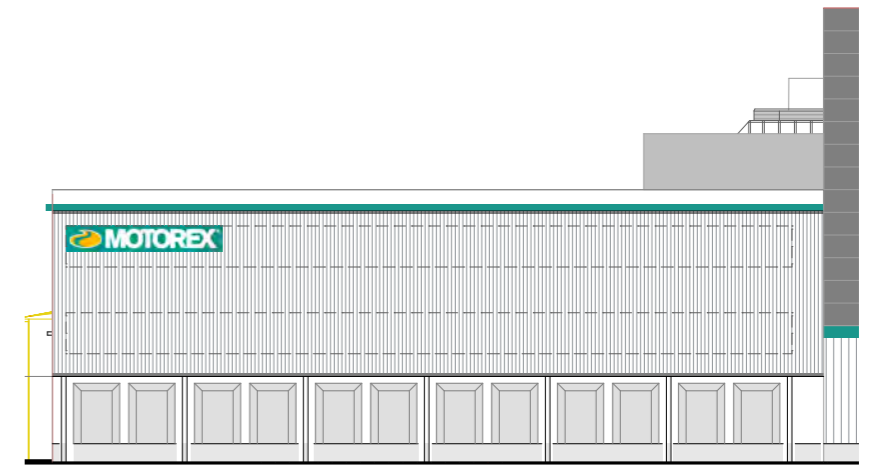
Gegenüberstellung Varianten



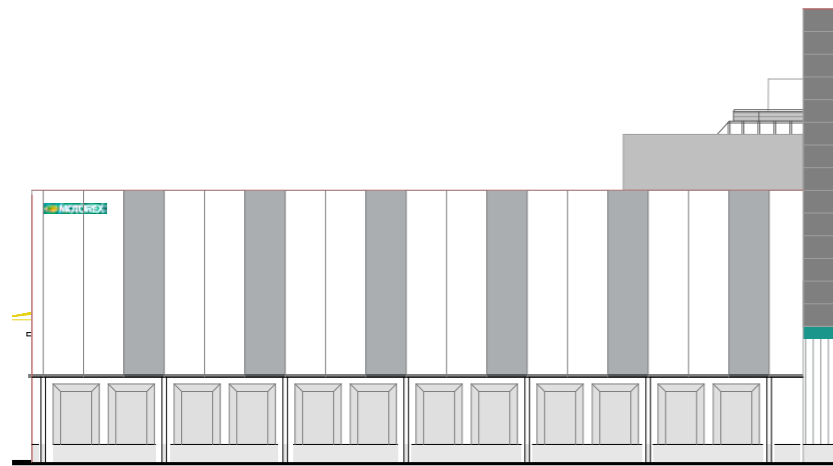
Variante 1



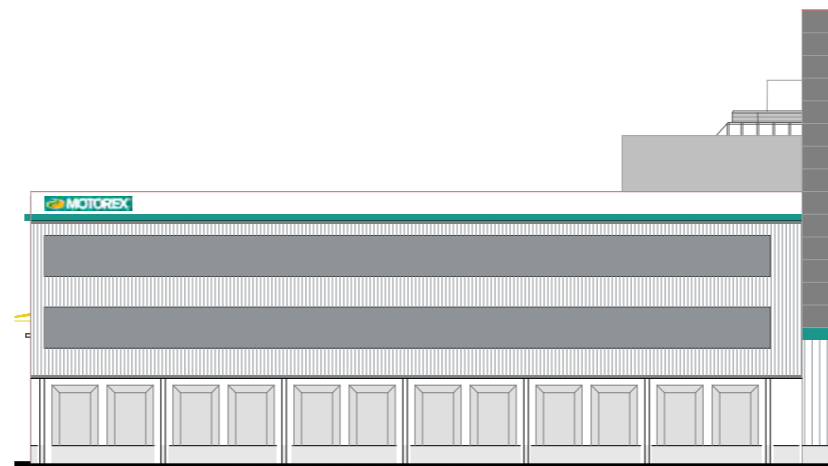
Variante 4



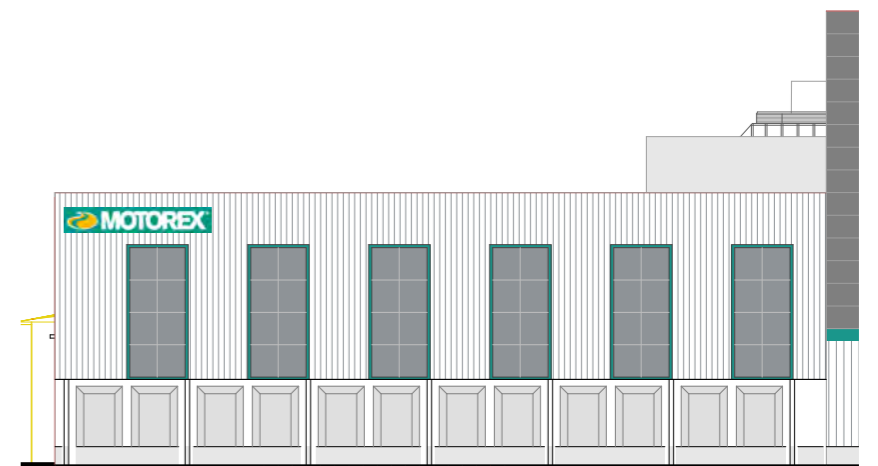
Variante 7



Variante 2



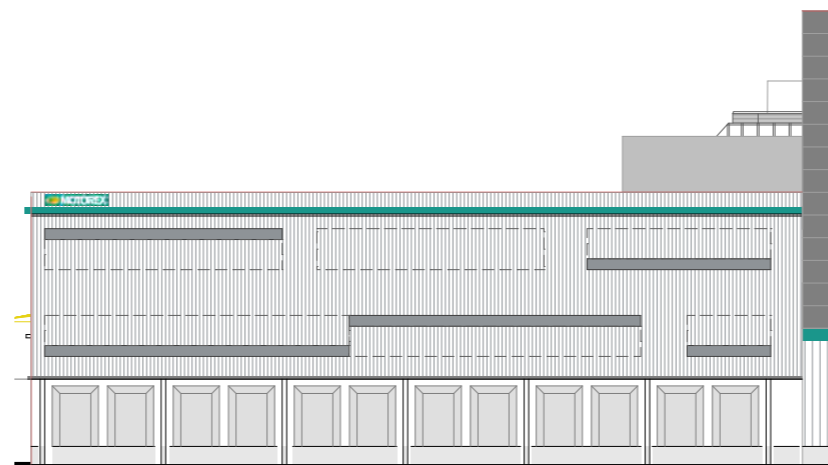
Variante 5



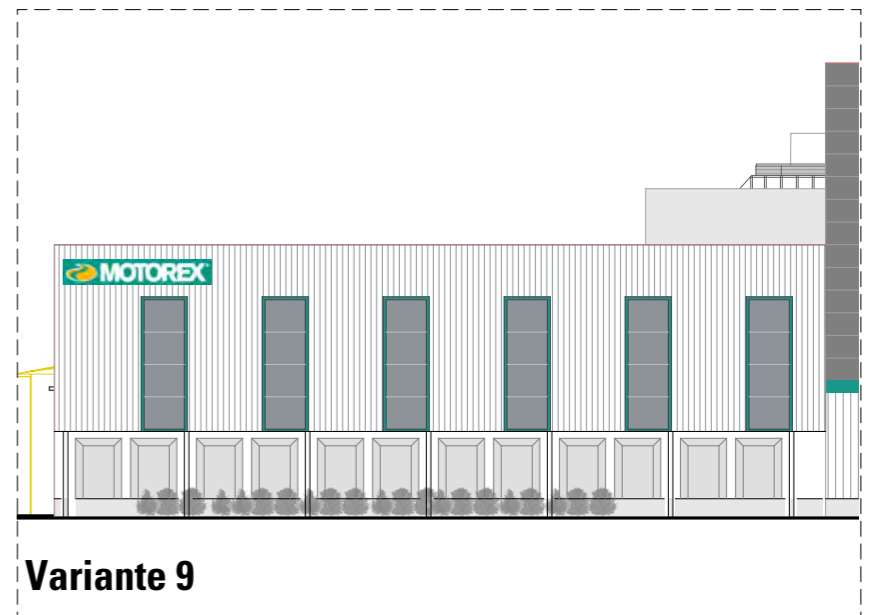
Variante 8



Variante 3

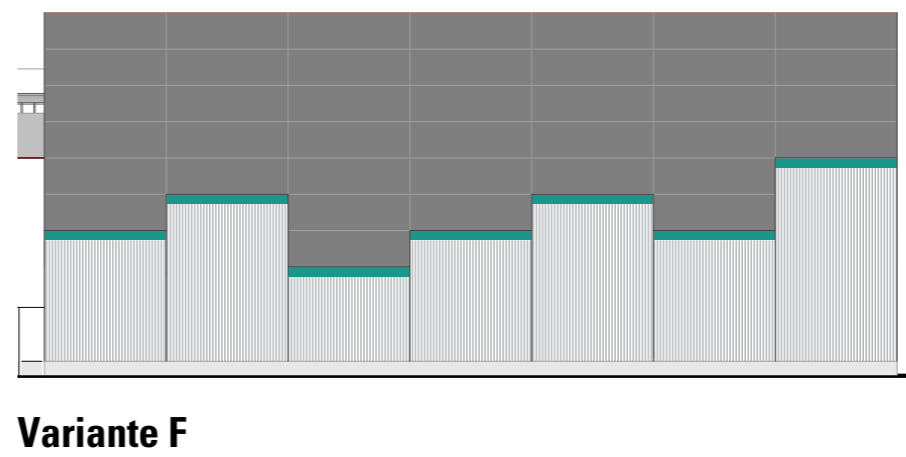
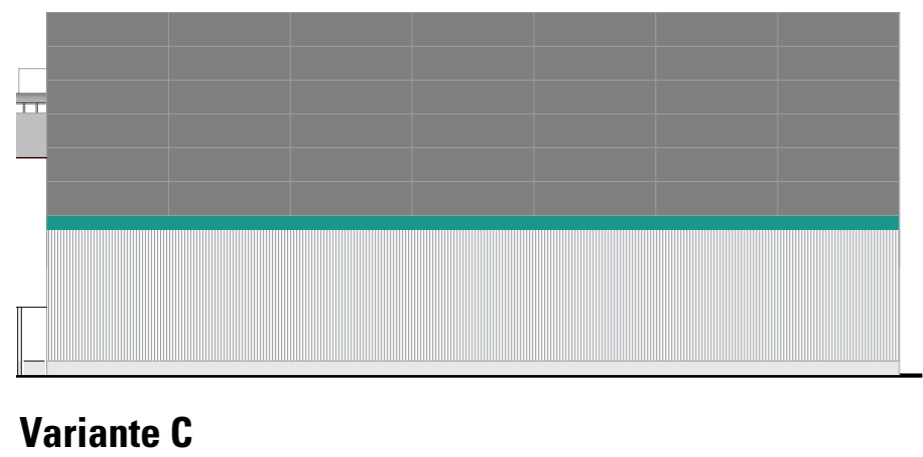
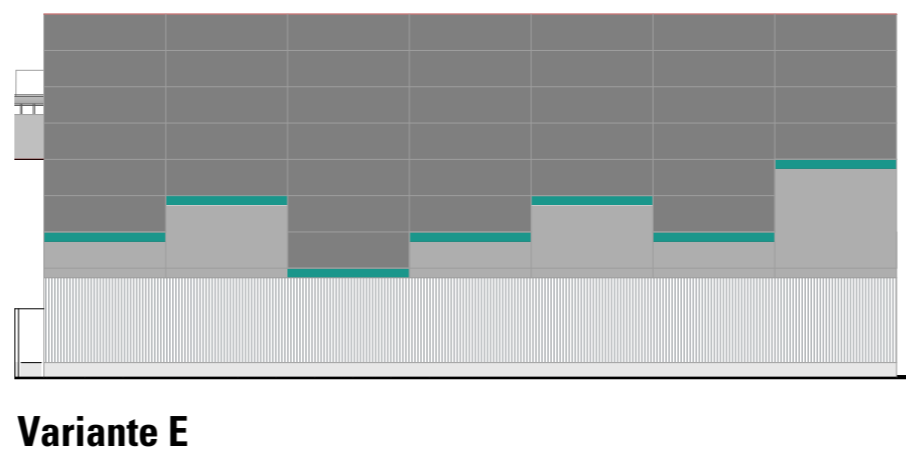
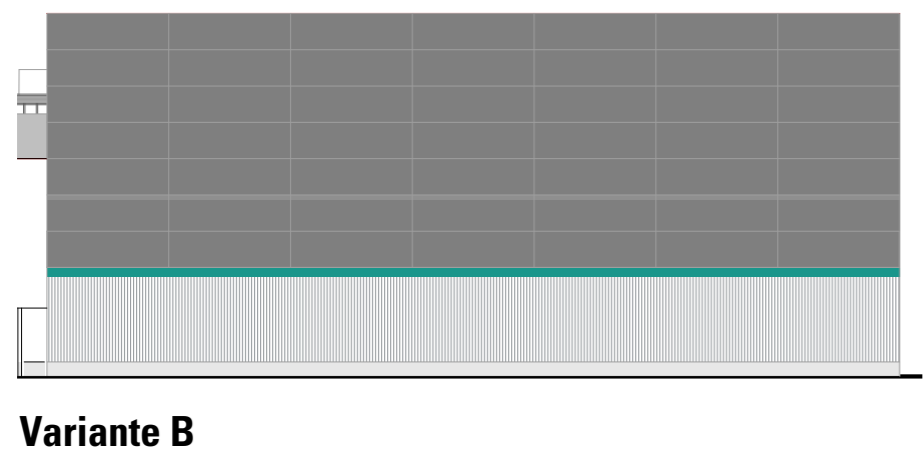
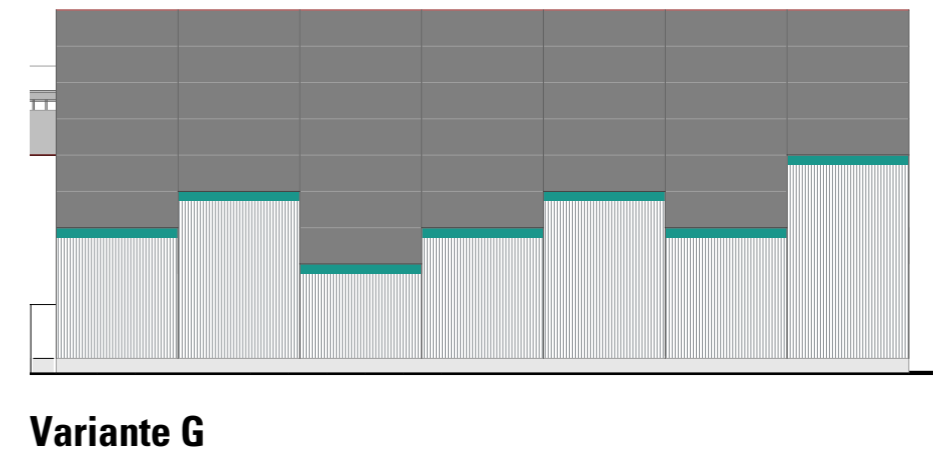
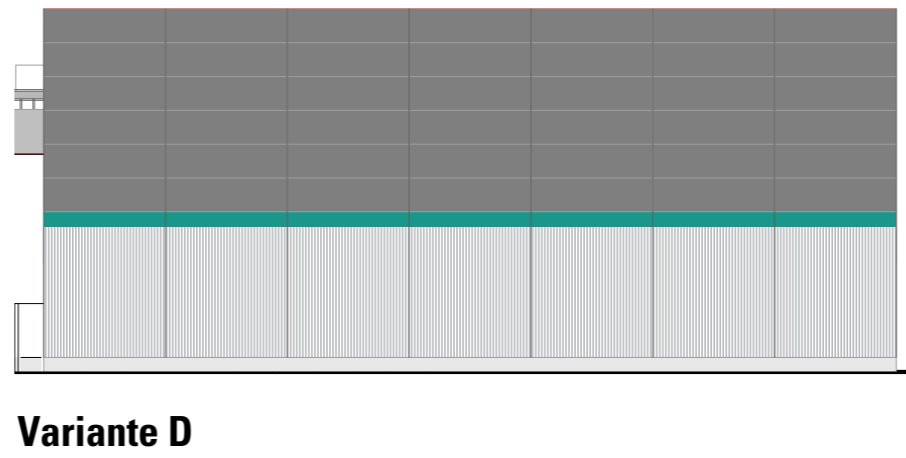
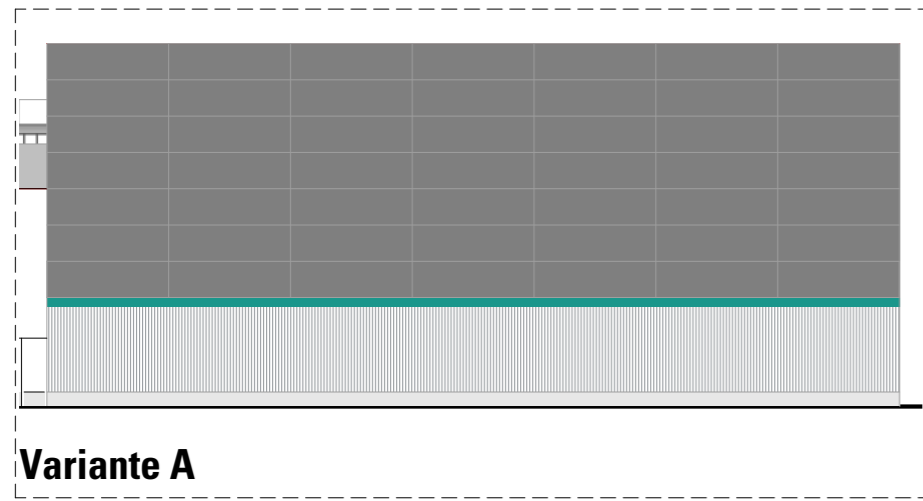


Variante 6



Variante 9

Zusammenstellung B / K



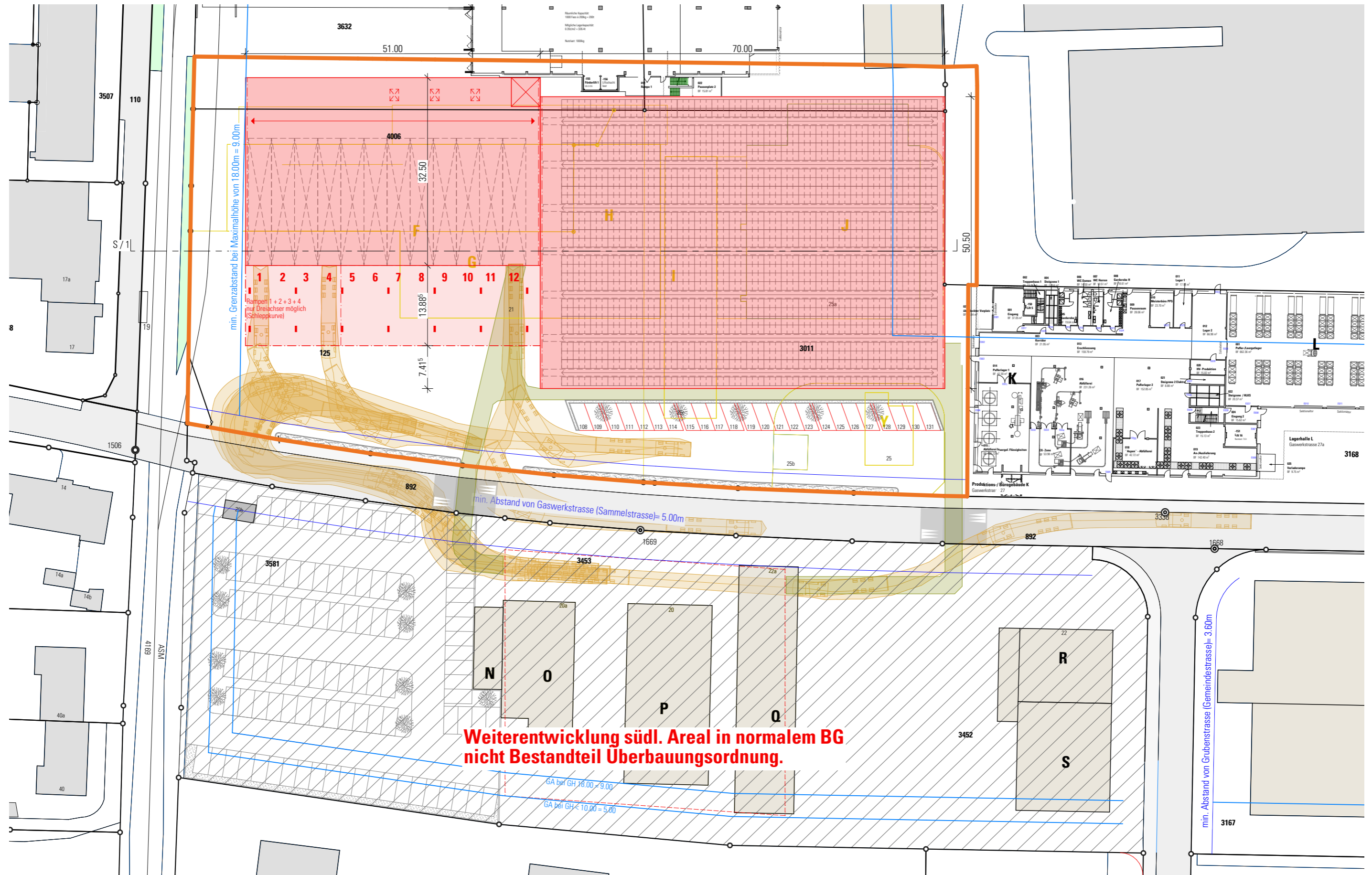
Zusammenstellung HRL



- Weiterentwicklung Variante 9 (B / K)
- Weiterentwicklung Variante A (HRL)
- Verfeinerung Fassadengestaltung (Farbe, Material)
- Eruiierung Anzahl Parkplätze
- Stadt: Abklärungen / Verkehrskonzept Gaswerkstrasse

Wie weiter?

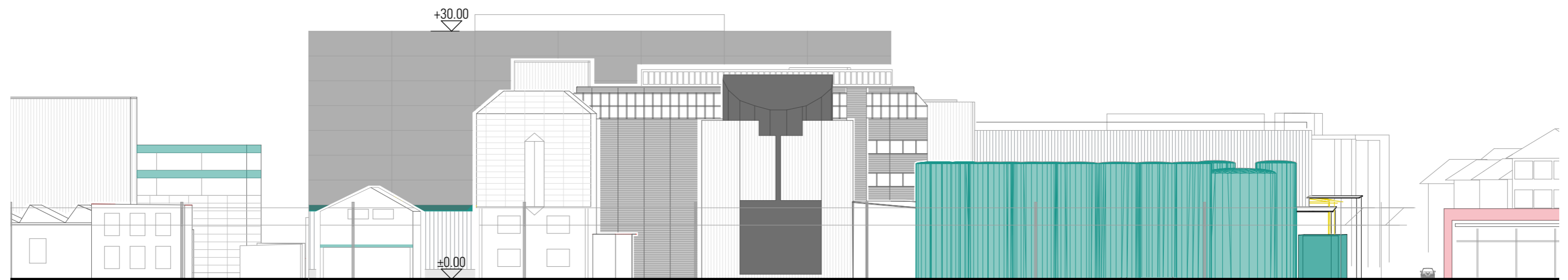
Planungsperimeter
 Firmenareal



Grundriss



Ansicht Ost // Création Baumann

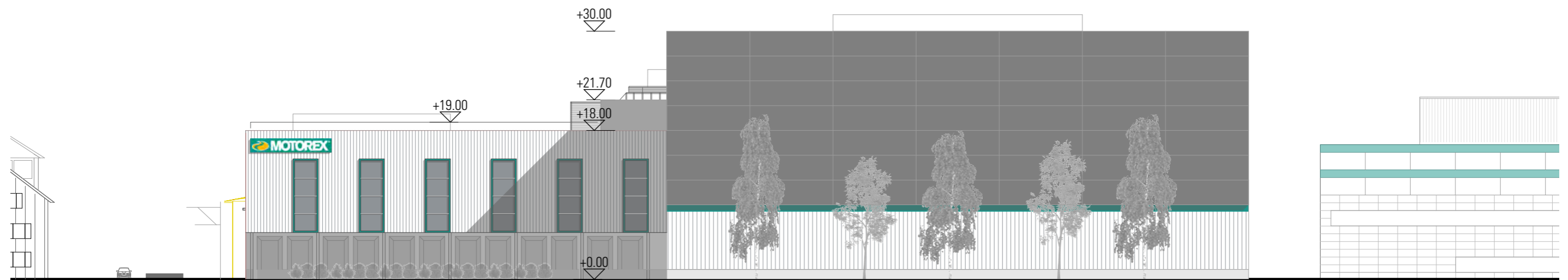


Ansicht Nord // Bern-Zürichstrasse

Fassadenabwicklung

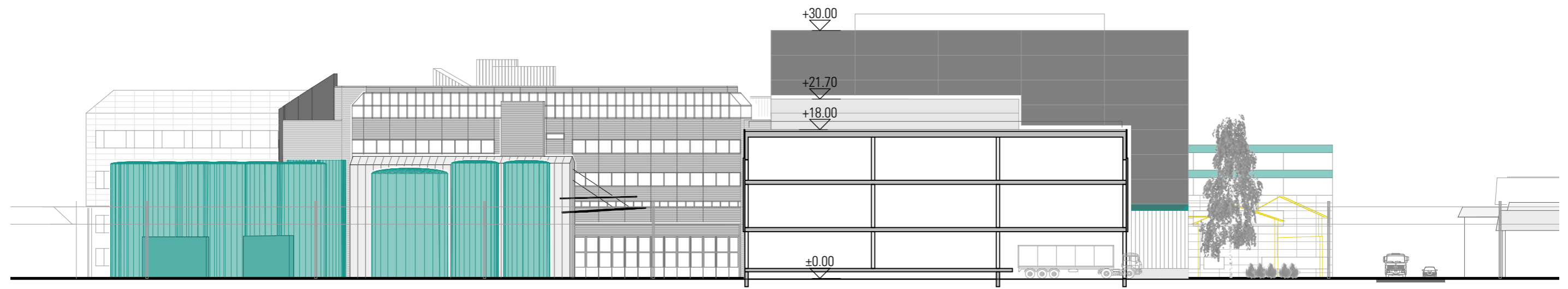


Ansicht West // ASM und Eichenweg



Ansicht Süd // Gaswerkstrasse

Fassadenabwicklung



Schnitt

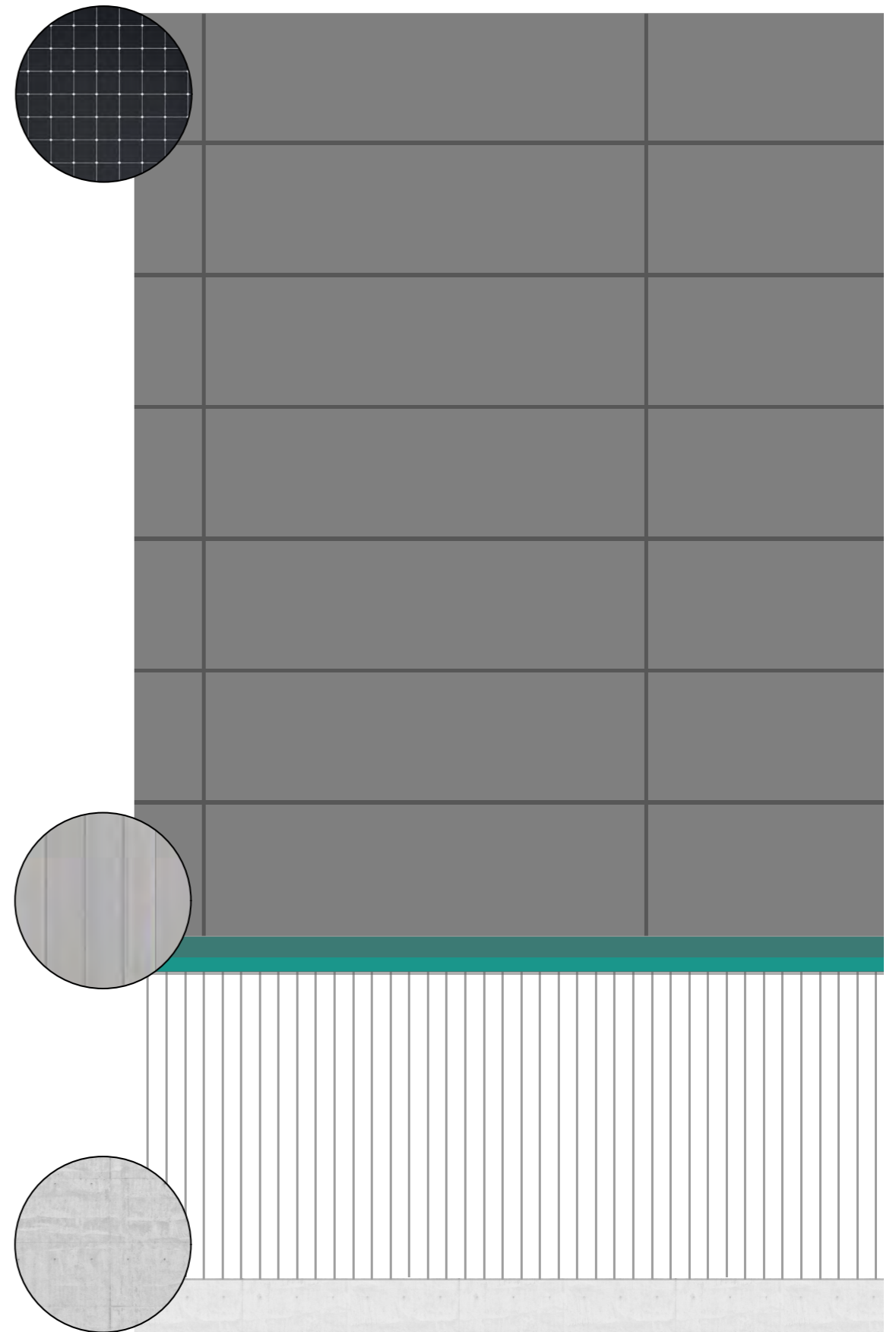
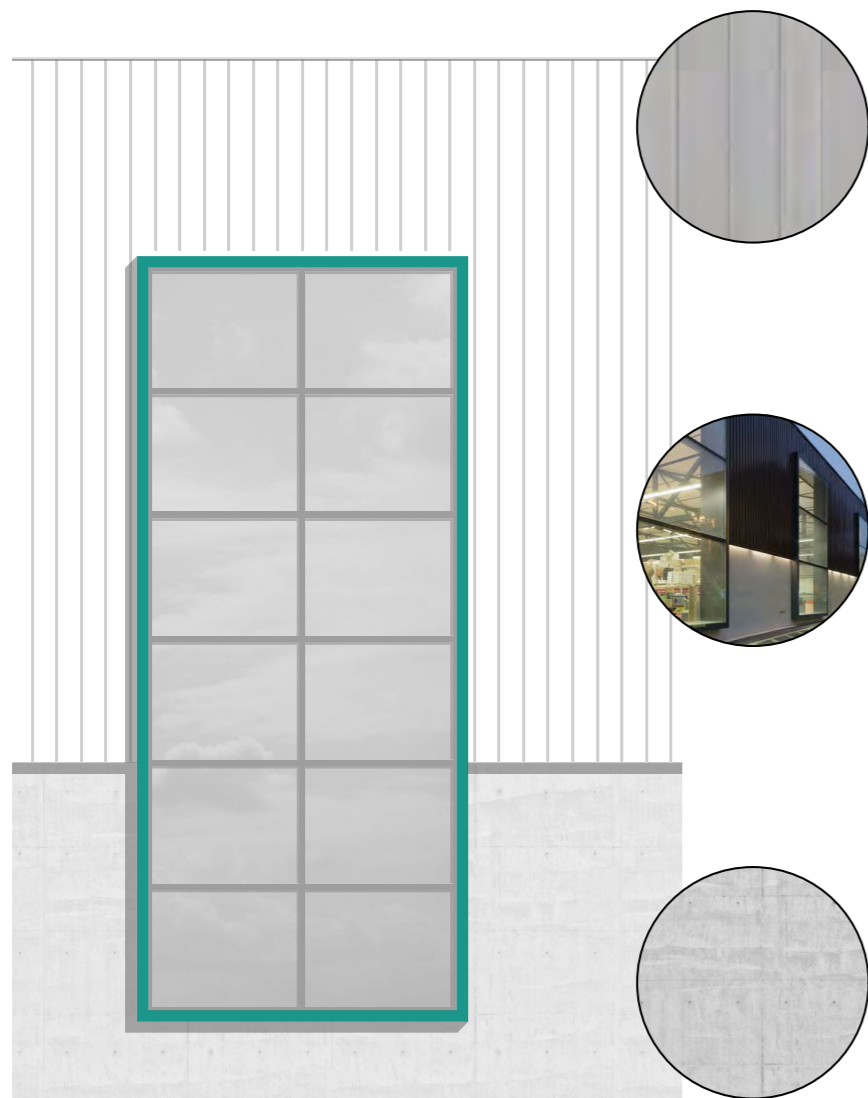
Fassadenabwicklung



Referenz - Fabrikhalle Deutschland



Referenz - Kebag Zuchwil



Fassadenansicht



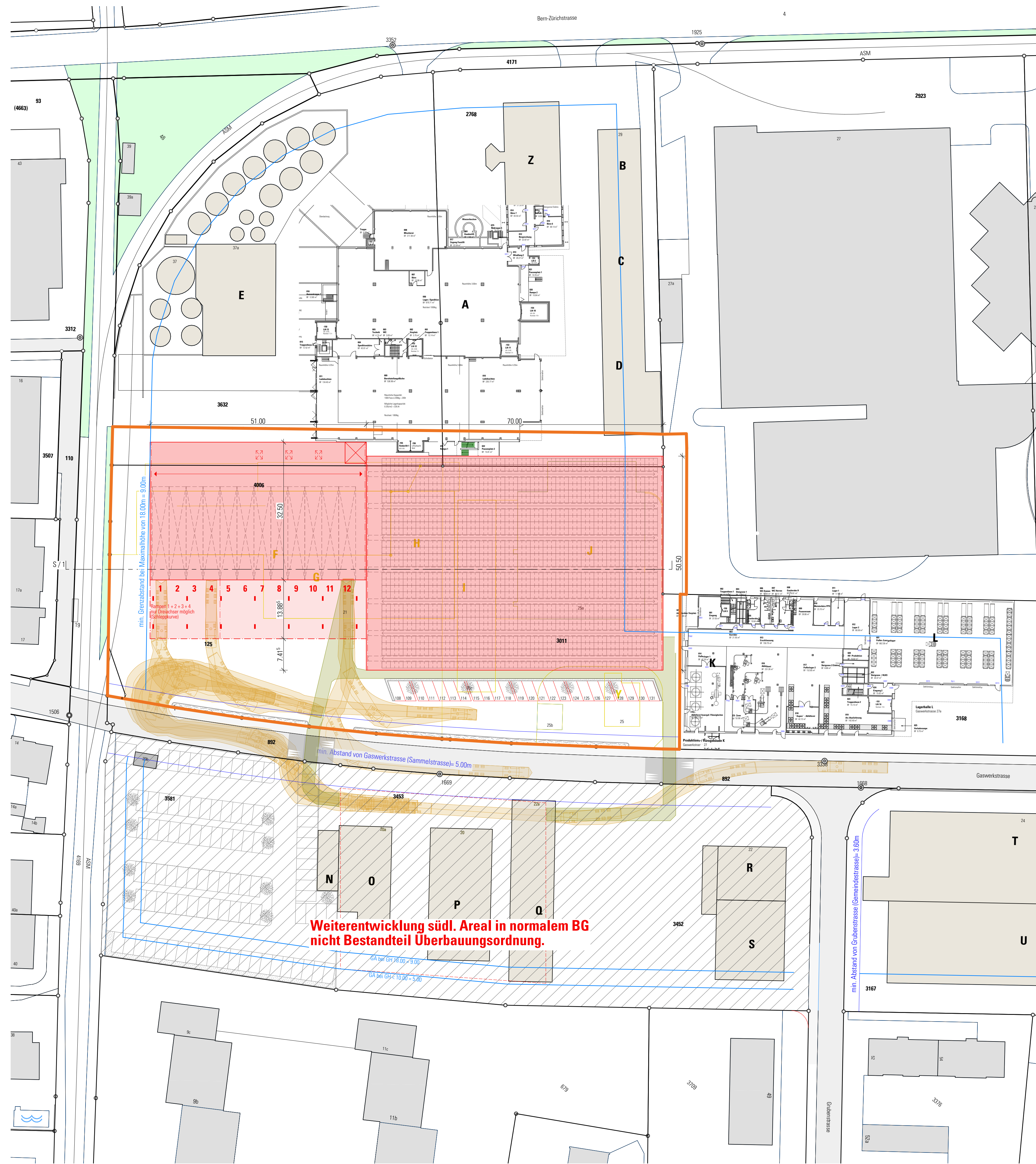
Referenz - Bernapark Deisswil

Herzlichen Dank!

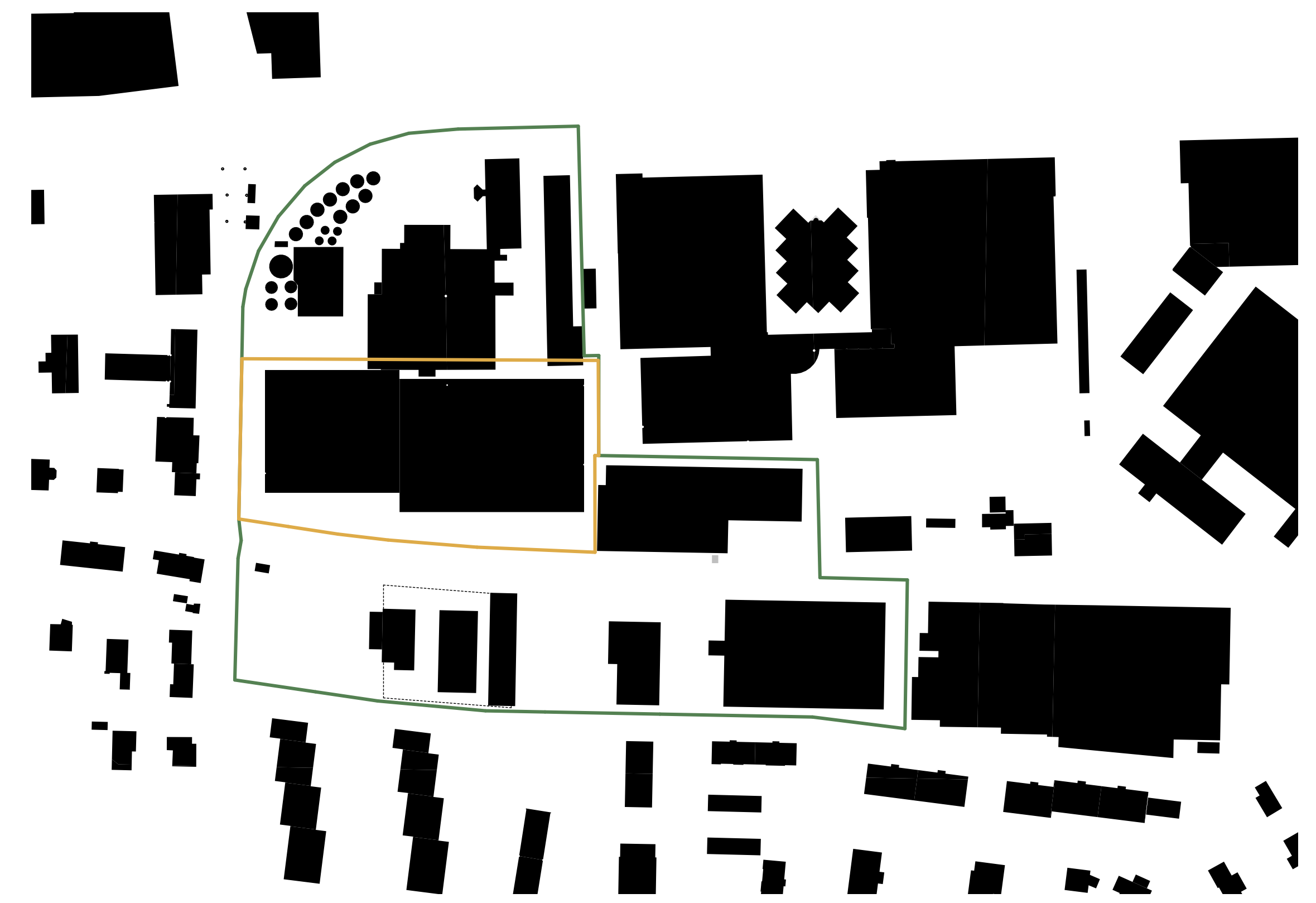
Neubau Logistikzentrum Motorex AG

Workshop 4, 21. November 2022

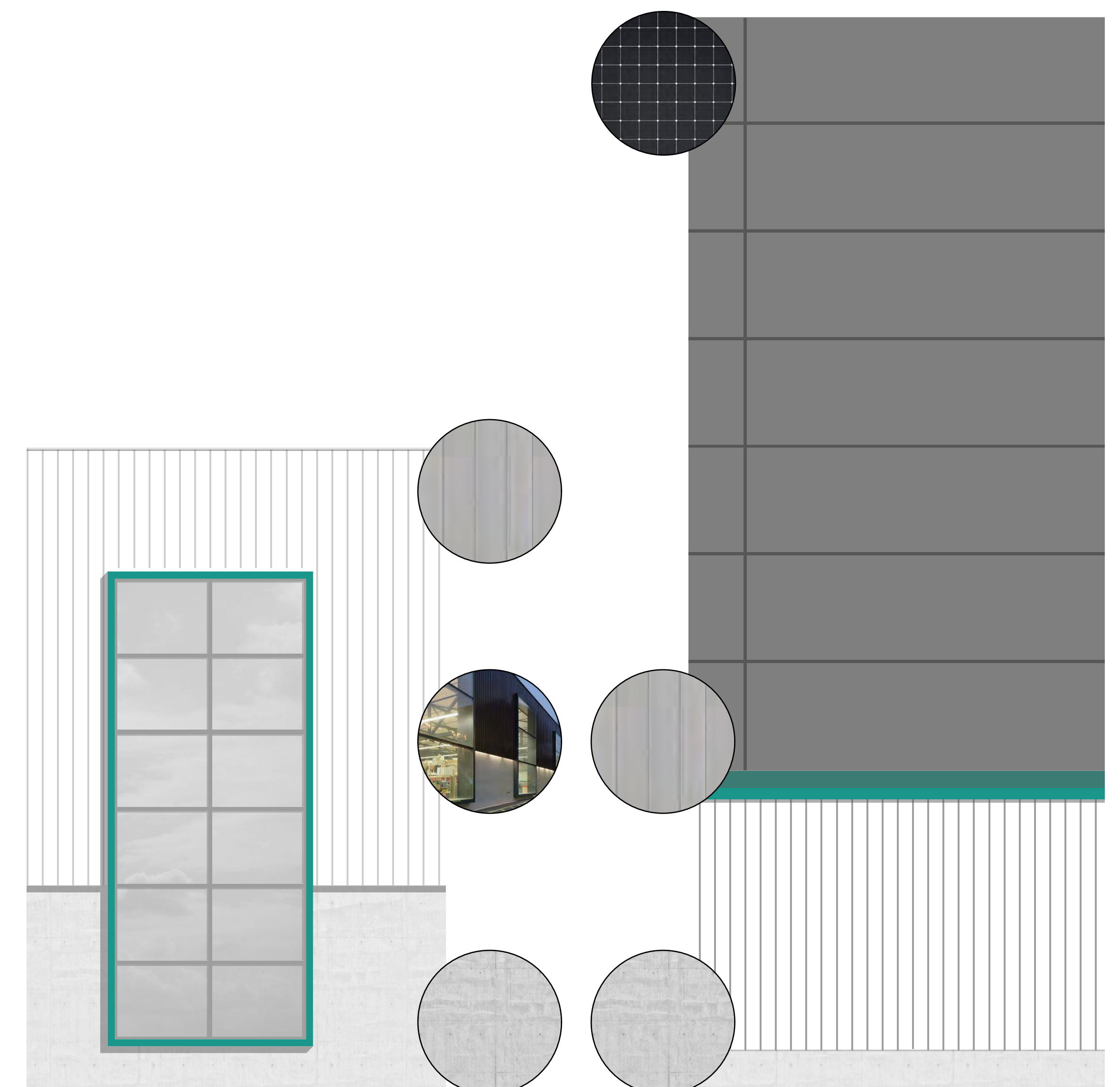
Gaswerkstrasse, Langenthal



Grundriss Mst. 1:500



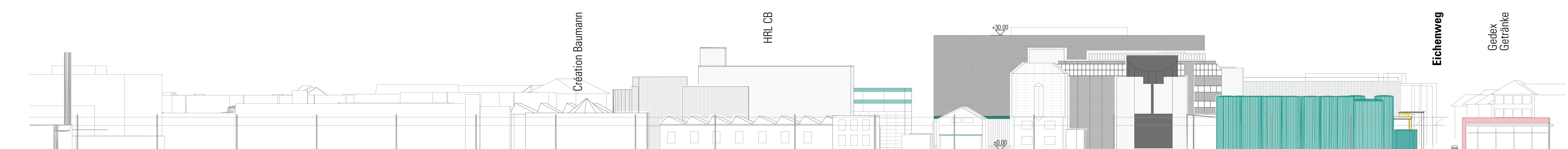
Nolliplan



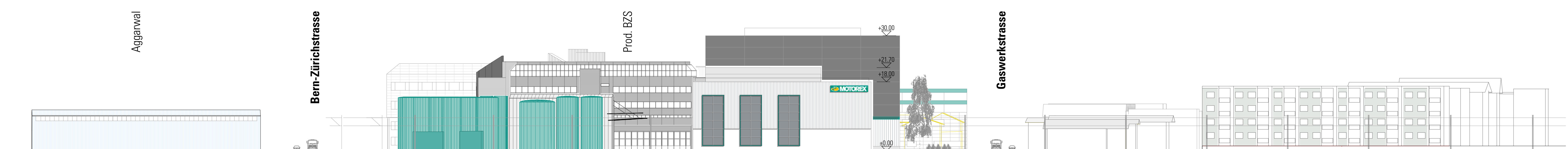
Fassadenschnitt Mst. 1:100



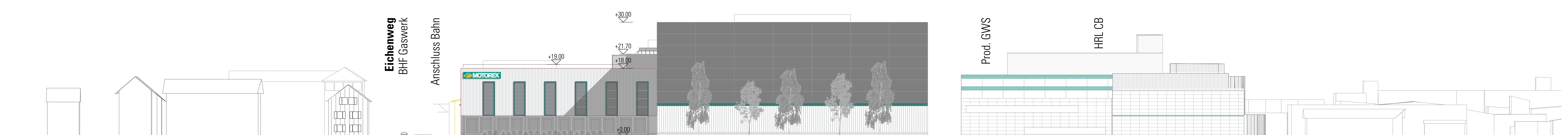
Ansicht Ost // Création Baumann



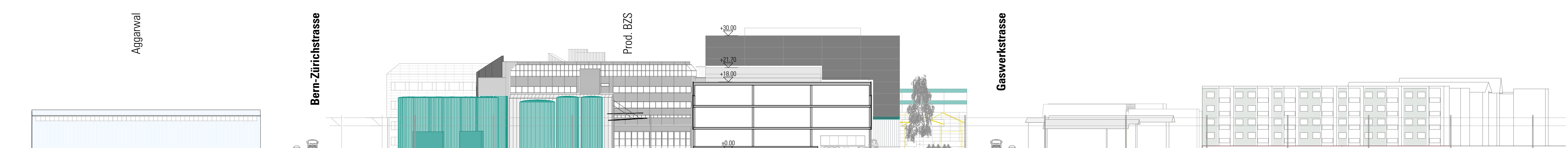
Ansicht Nord // Bern-Zürichstrasse



Ansicht West // ASM und Eichenweg



Ansicht Süd // Gaswerkstrasse



Schnitt